

2 Pieces of Wood with Decorative Relief

Wood

80 1/2" H x 7 7/8" W x 3 1/4" D

T2216.65



Decorative Wood Piece; Part of a Door

Wood

80 1/2" H x 7 7/8" W x 3 1/4" D

T2016.64



Pair of Hanging Ornaments

Metal

6 1/2"H x 3 5/8"W x 2" Dia

T2008.1040



Hanging Ornament

Metal

6 1/8"h x 3 5/8"W x 2"Dia

T2008.1041



Bust of a Young Girl

Terracotta

9 1/4"H x 6"W x 5 1/2"D

T2008.195



Buddha

Stone

10 1/2"H x 8"W x 3"D

T2008.196



Mixed Media Print

Birds with wings

Paper, pigment

8"H x 6" W

T2008.28



Mixed Media Print

Flowers

Paper; pigment

8"H x 6" W

T2008.29





Mixed Media Print

Fish

Paper; pigment

8"H x 6" W

T2008.30



Mixed Media Painting

Pink/black checker on left

Paper; pigment

8"H x 6" W

T2008.31



Mixed Media Collage

Pink/black bars

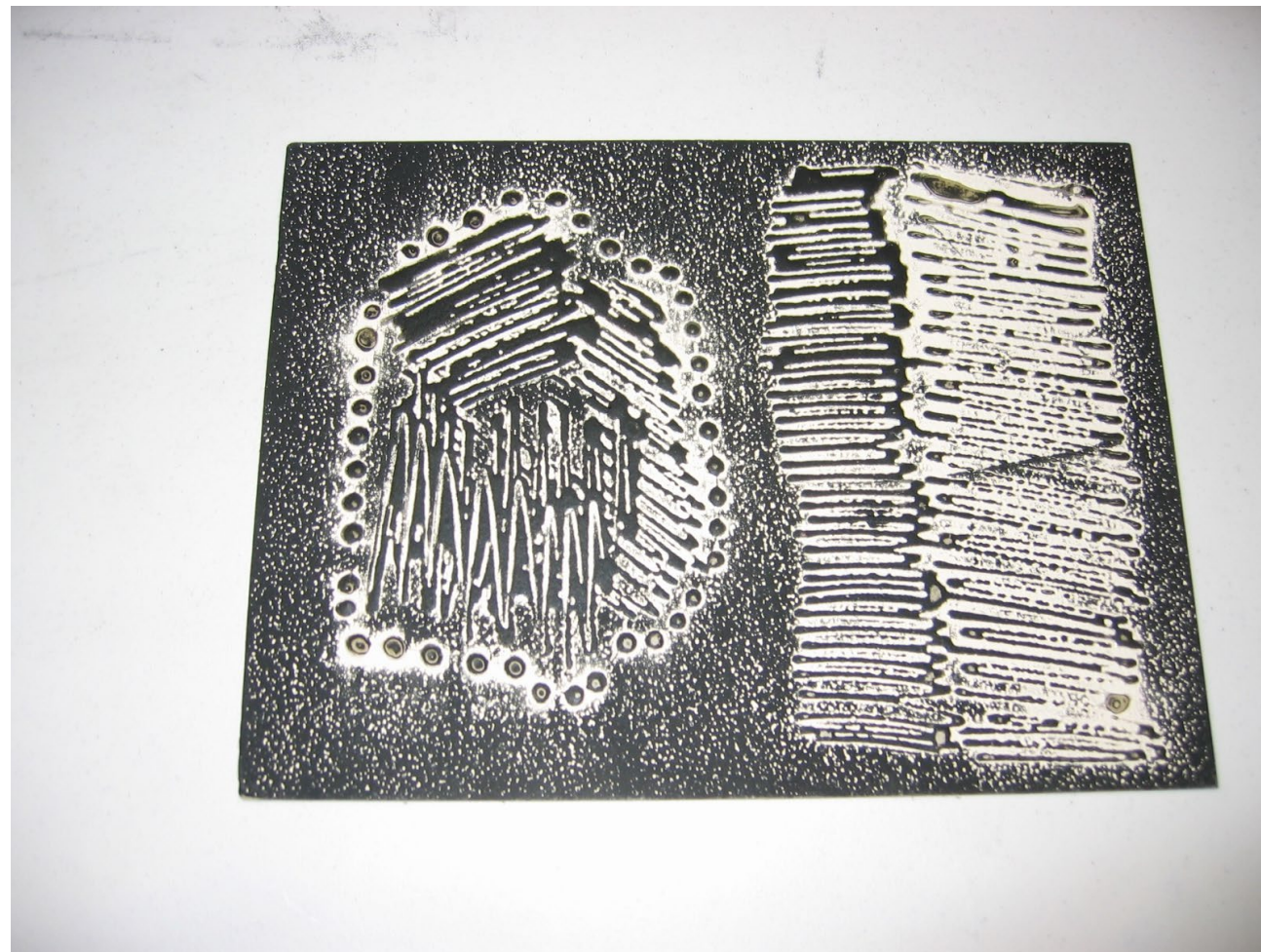
Paper; pigment

8"H x 6" W

T2008.32



Mixed Media Painting  
Black and white abstract  
Paper; pigment  
8"H x 6 1/8" W  
T2008.33



Mixed Media Painting

Rose Color

Paper; pigment

8 ¼ "H x 6 ¼ " W

T2008.34



Mixed Media Painting

Black/white circles and lines

Paper, pigment

8 ¼ "H x 6 1/8 " W

T2008.35



Mixed Media Collage

Black/white circles and lines

Paper; leaves; pigment

8"H x 6" W

T2008.36



Painting

Red painting with etchings

Paper; pigment

5 7/8" H x 7 3/4" W

T2008.37





## Mixed Media Collage

Spotted black and white background with central leaf; leaves are oval-shaped and are brown and black.

Paper, leaves, pigment

5 7/8" H x 7 7/8" W

T2008.38



Painting

Red and black painting with etching of ox in water

Paper, ink

8" H x 7" W

T2008.39



Mixed Media Collage

Spotted black and white background with central leaf; leaf is green and black.

Paper; leaves, pigment

5 7/8" H x 7 7/8"W

T2008.40



Vase

China

Stoneware, pigment, glaze

13"H x 7 ½ " Dia

T2008.456



Assorted Tools

6 pieces

Pacific Island

Wood, metal, tortoise shell

21 ¼ "H (biggest) x 3"W (smallest)

T2008.458



Metal Case of Slides

639 slides, case labeled:

9/15-10/21/81 by Helen Turtle

Metal, negatives, paper

Overall: 7 1/2"H x 14 1/2"W x 2 1/8"D

T2008.519



Box of Slides

278 slides of Indonesia, Malaysia, Macau,  
Hong Kong, Philippines

Negatives, metal

Overall: 10 1/4"H x 10 1/4"W x 2 1/4"D

T2008.522



Box of Negatives

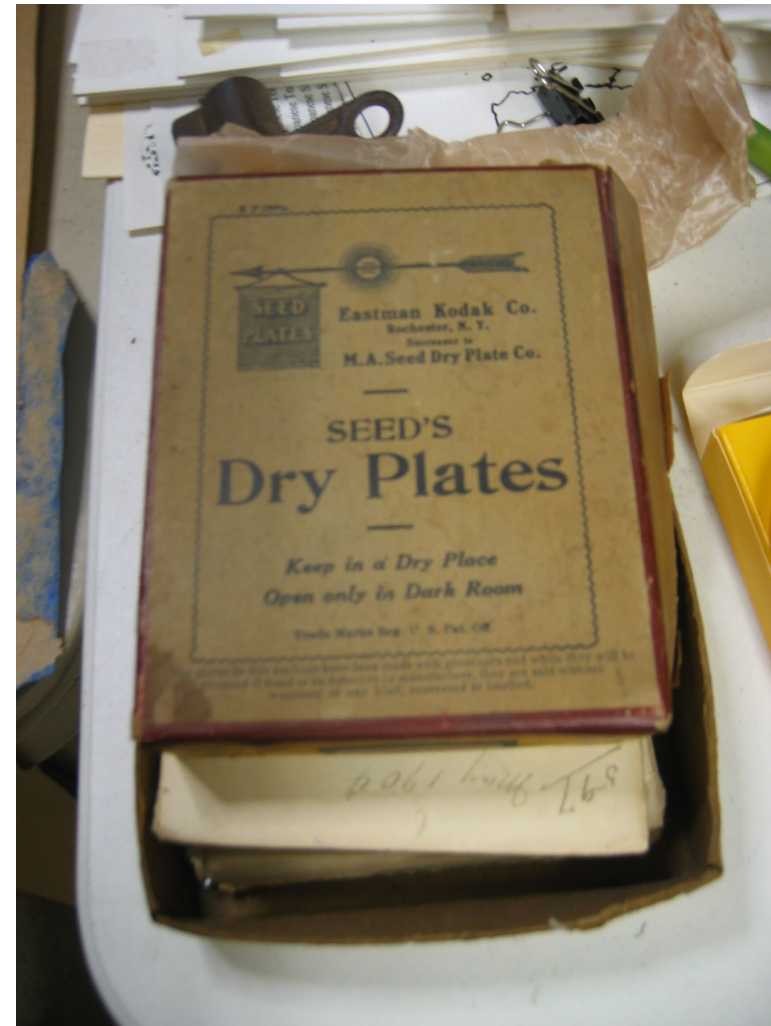
46 negatives

Paper, negatives

Box: 1 1/4" H x 4 1/2" W x 5 1/2" D

Slide: 4 5/8" H x 3 5/8" W

T2008.527





Buffalo Bell

United States

Wood

13"H x 6"W x 3"D

T2008.528



## 2 Tier Stand

A&C the bottom black

B&D Green Fabric and Red

Japan

Wood, pigment, fabric

O:2.75"Hx8.75"Wx6"D

A&C:1.25"Hx8.25"Wx6."D

B&D:1.75"Hx7"Wx5.5"D

T2008.594 A-D



Pair of Stands

Japan

Wood; lacquer

1.35" H x 4.875" W x 3.75" D

T2008.595



Cards

Girls Day greeting card

Japan

Paper, ink

7.625"Hx4.625"W

T2008.596



Stand

Miniature children's set with red top and  
gold flower décor over black paint

Possibly Japan

Wood, lacquer, pigment

3 1/4" H x 5 1/4" W x 5 5/8" D

T2008.599



Books (4 Vol.)

Yang Fa Kwei Chong (books of Taoist Chants)

China

Paper; ink

7-7/8"H x 5 1/4"W x 1/8"D

T2008.613



Books (2 vol)

Japanese woodblock print

Japan

Paper, ink, brocade

Each: 15 1/8"H x 10 1/4"W x 1 5/8"D

T2008.617



Book

Rubbings and Calligraphy

Korea

Paper; ink

11 1/4"H x 7 1/8"W x 7/8"D

T2008.618





Books (2 volumes)

Stone rubbings of calligraphy

China

Paper, ink, wood

Vol 1: 11 5/8"H x 5 3/8"W x 1"D

Vol 2: 11 5/8"H x 5 3/8"W x 7/8"D

T2008.619



Books (2 volumes)

Yu Che Yuan Ming Yung Yung (Qing, 1988)  
Scenery of Yuan Ming Yuan

China

Paper, ink, silk string, wood

Each: 10"H x 6"W x 1/2"D

Overall: 10 1/8"H x 6"W x 1 1/4"D

T2008.620



Books (3 volumes)

Ehon Kameoyama (story of Heikes) by  
Nishikawa, Sukenobu 1747

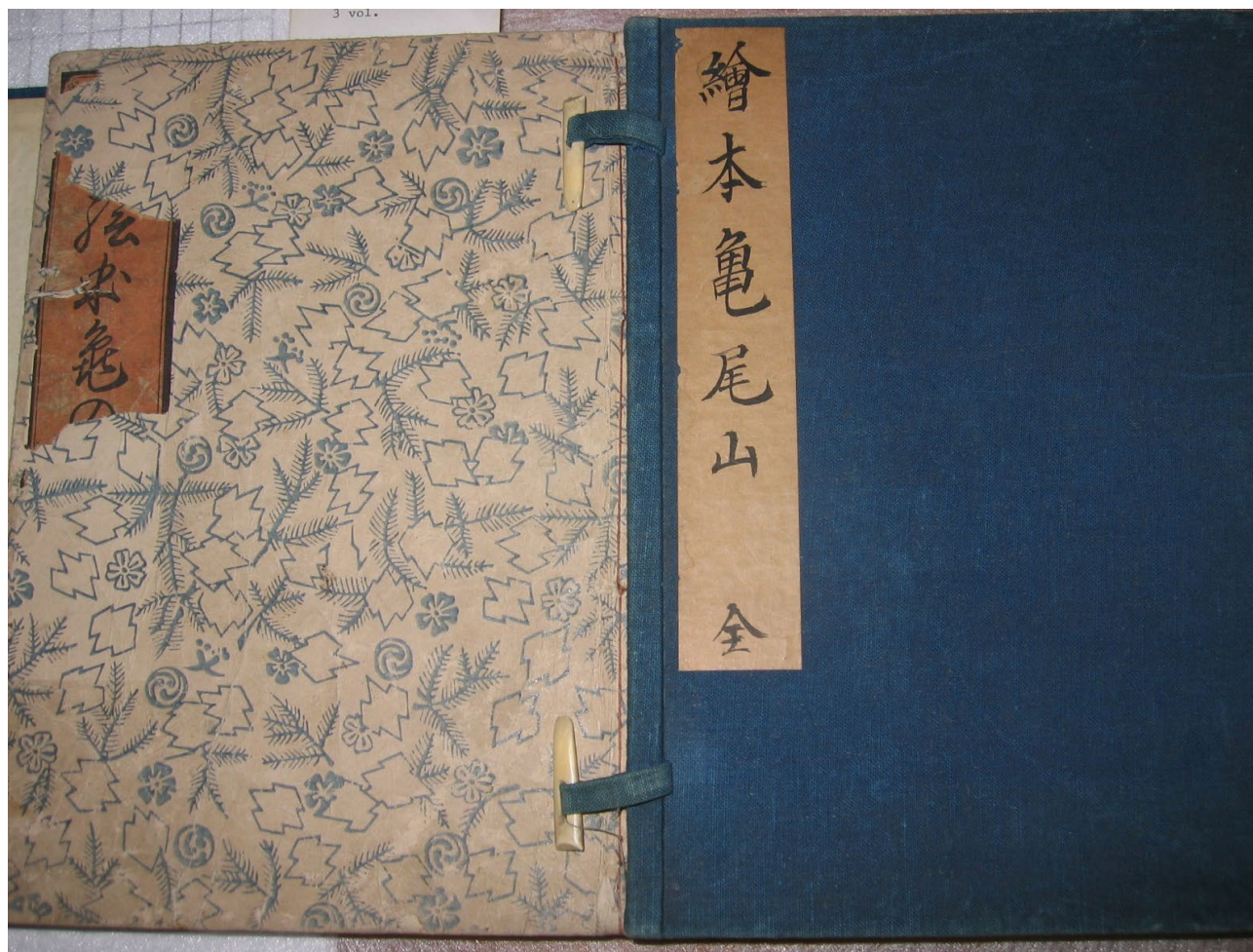
Japan, Kyoto

Paper, ink, fabric, ivory

Each: 8 9/16"H x 6 1/8"W x 1/2"D

Overall w/ bookcase: 8 9/16"H x 6 1/2"W x 1  
1/4"D

T2008.621



Book

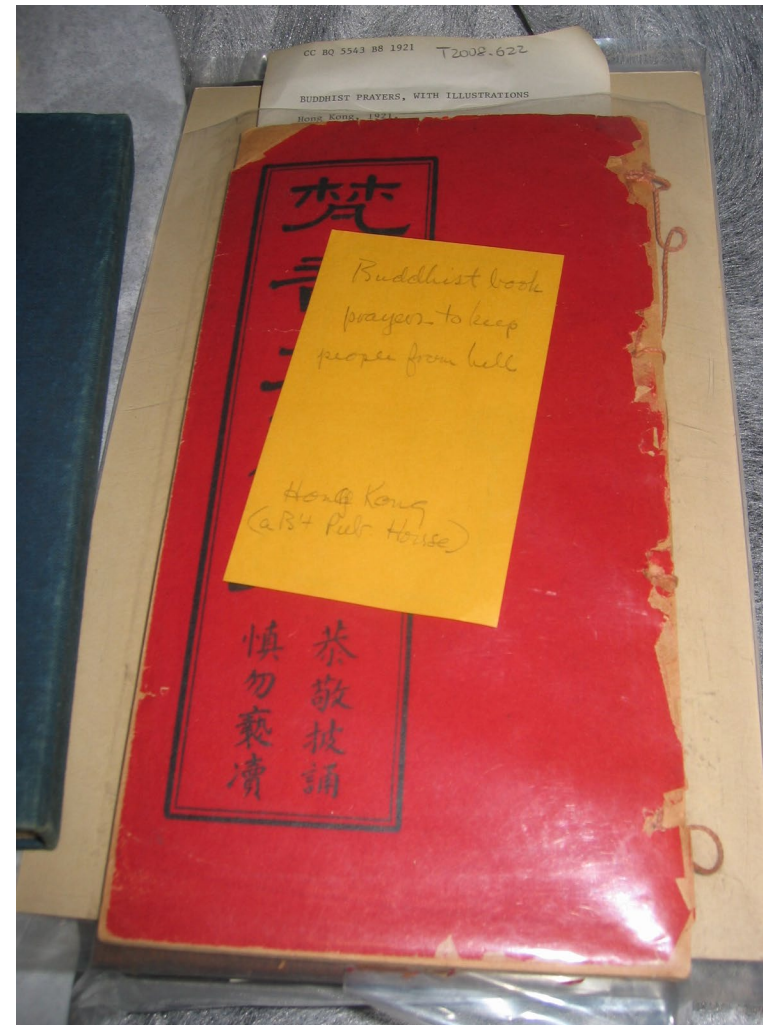
Buddhist Prayers and Painting

China 1921

Paper, ink

9 3/4"H x 5 1/8"W x 1/2"D

T2008.622



Books (8 Volumes)

Ten Bamboo Studio Calligraphy

China

Paper, ink, fabric, ivory

10 7/8"H x 6 1/2"W x various D

T2008.623



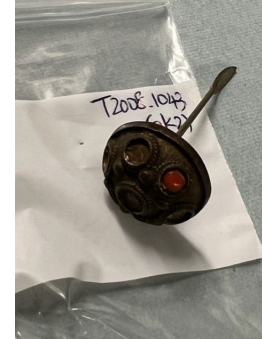
## Miscellaneous Items

(13 total); seal, ceramic fig, earring, finial, etc.

Clay, stone, wood, copper, brass

Fig: 1 3/4"H x 2 1/8"W x 1 1/2"Dia;  
Seal: 2 1/4"H x 3/4"W x 1 5/8"Dia; Metal plate  
w/ stone: 3 7/8"H x 1 7/8"W x 1/2"D; Metal  
cut out ornaments: 1 1/4"H x 2 1/8"Dia;  
Wood Cap: 2 1/4"H x 1"Dia; Wooden cap w/  
tassel: 2 7/8"h x 1 3/8"Dia; Metal Ornament:  
2 3/8"H x 5/8"Dia

T2008.1043



Pin

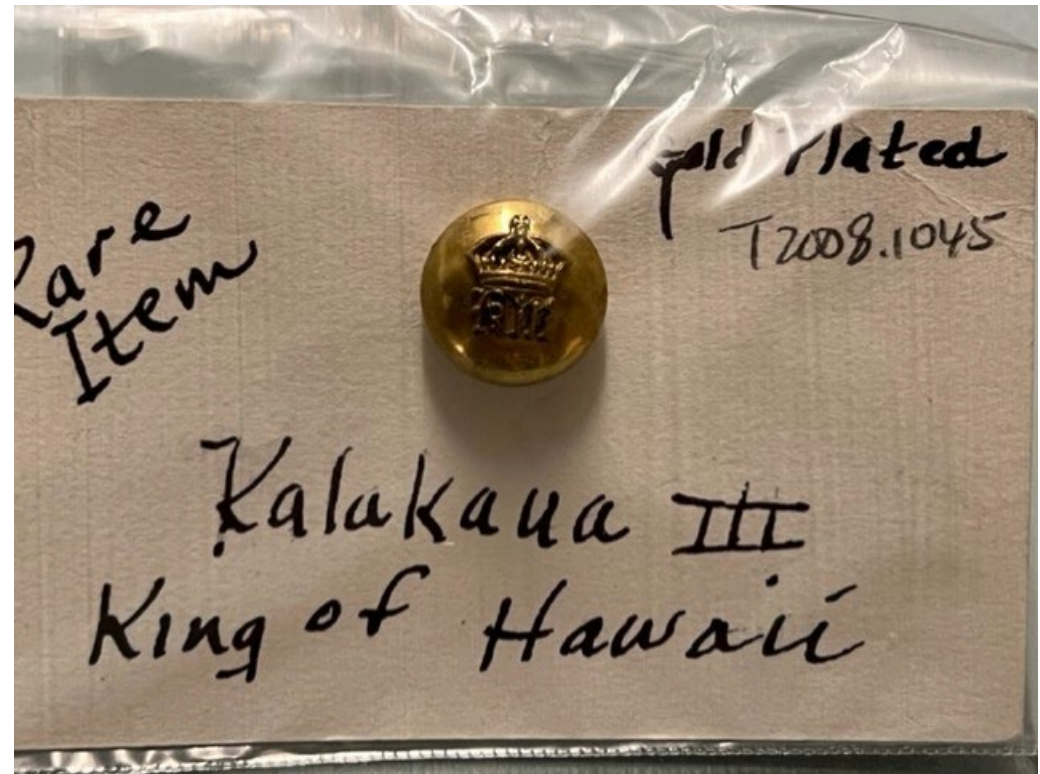
With description: King of Hawaii, Kalakaua III

Hawaii

Metal, gilt

1/2"H x 3/4"Dia

T2008.1045



Books (12 vol)

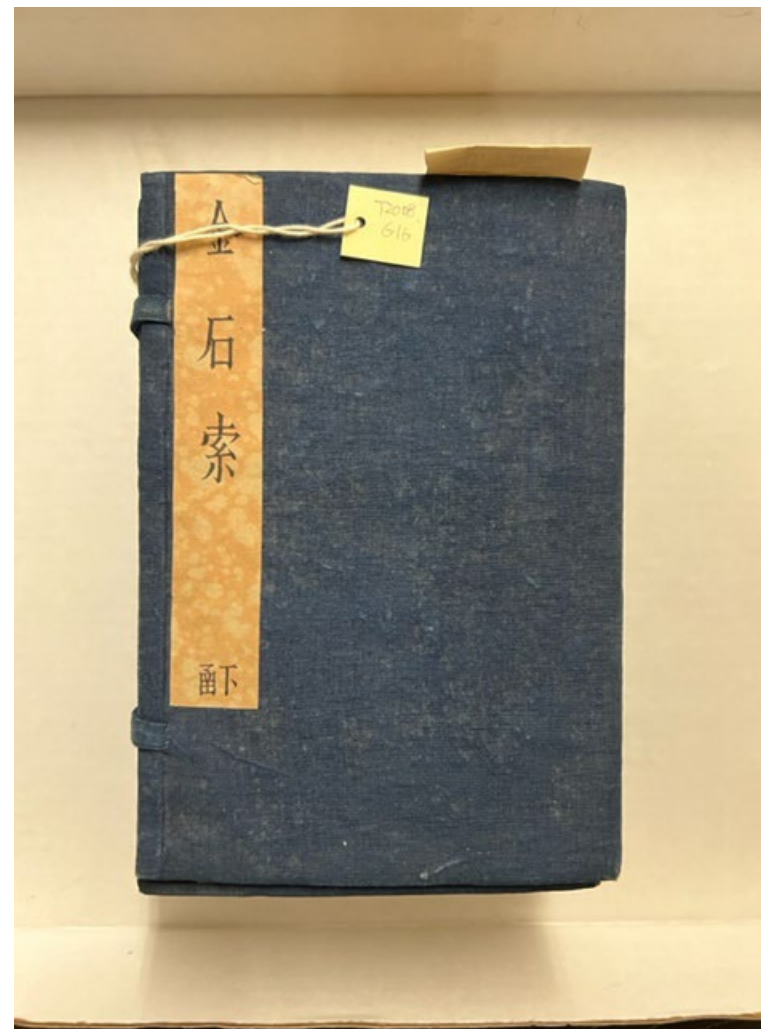
Chin Shih So Metal and Stone Res. By Feng  
Yun-Peng & Feng Yun-Yuan

China

Paper, ink, ivory

ea. Book: 8"H x 5-1/4"W (various depths)

T2008.616





Carved Ivory

Ivory

4"H x 1"W x 1/4"Dia

T2008.1044



Decorative Bird Beak with Stand

Carved In shape of bird beak, on wooden stand

Bone, ivory

Overall: 5 1/2"H x 8" W x 3" D

T2008.148AB



Animal Tusk

Tusk, ivory

4 1/4" H x 1 1/2" W x 1" D

T2008.149



Decorative Object

China

Ivory

10" H x 5 1/8" Dia.

T2008.156



Stand

Japan

Wood; lacquer

1" H x 4.875" W x 3.75" D

T2008.598



Lid

Ceramic

1"H x 1 5/8" Dia

T2007.152



Lid

Ceramic

1"H x 2 1/8" Dia

T2007.153



Lid

Ceramic

1 5/8" H x 2 1/2" Dia

T2007.155





Floral Fan

Fan with calligraphy and seal

9 5/8H x 10 5/8W

T2007.20



Woodblock Print Fragmented

36 Views of Tokyo

Japan

6 ½" H x 8 ½" W

T2007.185



Textile Hanging

Embroidered Textile Hanging, padded

Myanmar (Burma)

Cloth, glass, metal

69"H x 134"W

T2019.3



Textile Hanging

Embroidered Textile Hanging

Myanmar (Burma)

Cloth, glass, metal

40"H x 91"W

T2019.4



Scroll Painting

Scroll depicting cat looking up at a bell

paper, pigment

Overall: 64" H x 8 1/2" W

T2022.4

