

1



Toys and miscellaneous musical instruments, group of ten
Japan, 1910
paper; bamboo
Various, see details below.
USC Pacific Asia Museum
Gift of Mr. Harvey W. House
1976.35.13A-J

2



Toy, lion head
Japan, 20th C.
papier mache; paint; cotton
3.75" H x 3" W x 5" D
USC Pacific Asia Museum
Gift of Ruth Ann Younglove Loxley
1977.10.10

3

Kabuki actor doll
Japan, mid 20th C.
wood; metal; pigment; lacquer; fabric; bamboo, hair.
Doll: 10 in x 10 in x 6 in; Stand: 1 1/8 in x 11 5/8 in x 9 1/4 in;
USC Pacific Asia Museum
Gift of Mr. P.E. Twitchell
1977.14.3

4





Doll, boy, and futon
Japan, 20th C. (1930-40)
silk crepe, cotton, silk
A: 11" H. B: 8.5" H x 5.5" W
USC Pacific Asia Museum
Museum purchase
1977.45.1AB

5




Kaimaki quilt and accessories
Japan,
silk crepe; silk satin; wood
Various, see details below
USC Pacific Asia Museum
Gift of Miss Helen Perkins
1978.22.41A-E

- 6  *Dolls, pair*
Japan, 20th C.
wood
A: 2.3125" H x 1.5" W. B: 1.625" H x .625" W x .375" D.
USC Pacific Asia Museum
Gift of Miss Helen Perkins
1978.22.55AB
-

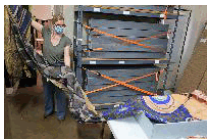
- 7  *Dog*
Japan, c. 1940
silk; wood; paper
4" H x 3.5" W x 2" D
USC Pacific Asia Museum
Gift of the Collector's Gallery
1978.60.1
-

- 8  *Dog*
Japan, 20th C.
clay; tempera; pigment
3.75" H x 2.5" W x 4.25" D
USC Pacific Asia Museum
Gift of the Collector's Gallery
1978.60.2
-

- 9  *Inu-hariko, toy dog*
Japan, late 20th C.
papier-mache; pigment
3" H x 2" W x 3" D
USC Pacific Asia Museum
Gift of the Collector's Gallery
1978.60.3
-

- 10  *Boy's Day kite*
Japan, 20th C.
cotton; pigment
137" H x 16.5" W
USC Pacific Asia Museum
Gift of Mrs. Nina Bushnell
1978.74.23
-

11



Boy's Day kite
 Japan, 20th C.
 cotton; pigment
 206" H x 36" W
 USC Pacific Asia Museum
 Gift of Mrs. Nina Bushnell
 1978.74.24

12



Boys Day celebration decoration, arrow-shaped painted metal pieces which fit into a wooden wheel with wooden cap
 Japan, 20th C.
 metal; wood; wire; cord
 Arrows: 13.125"H x 3.375"W x 3.375"D; quiver: 19.875"H x 2.875"W x 2.125"D; C1, C2: 1.5" H x 2.75" DIA; D1, D2:1.375" H x 1.25" DIA
 USC Pacific Asia Museum
 Gift of Mrs. Nina Bushnell
 1978.74.28

13



Toy figurine, boy
 Japan, 20th C.
 wood; silk; plater; paint; cotton; straw
 5" H x 5" DIA
 USC Pacific Asia Museum
 Gift of Mrs. J.H. Wayland
 1979.56.1

14



Bean bag toys, set of three
 Japan, 20th C.
 cotton; beans
 2" H x 2.5" W x 1.5" D
 USC Pacific Asia Museum
 Gift of the Collector's Gallery
 1979.69.2ABC

15



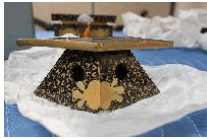
Doll
 Japan, Meiji period (1868-1912); late 19th C.
 silk; wood; cotton; straw
 9.5" H x 3.5" W x 3.5" D
 USC Pacific Asia Museum
 Gift of Mrs. Hunt Lewis
 1979.90.1

16



Girl's Day Table or stand
 Japan, 20th C.
 lacquer
 3.75" H x 4" DIA
 USC Pacific Asia Museum
 Gift of Roland Phillips
 1980.17.1

17



Stand and base. Girls Day
 Japan, c. 1900 -1925
 lacquer
 2.125" H x 5.25" W x 2.25
 USC Pacific Asia Museum
 Gift of Roland Phillips
 1980.17.2AB

18



Box with cover, Girls Day
 Japan, c. 1900-1925
 wood, lacquer, metal, silk
 Overall: 3.375" x 6" W x 2.75" D, A: 0.875" H x 6" W x 2.75"D, B: 2.75" H x 6" W x 2.75" D
 USC Pacific Asia Museum
 Gift of Roland Phillips
 1980.17.3AB

19



Tea set, Girl's Day
 Japan, c. 1960
 lacquer
 A: 7" H x 3.75" W x 1" D; B: 3.125" H x 2.5" W x 2.125" D ; C: 1.75" H x 2" W x 2" D; D:
 1.75" H x 2.375" W x 1.5" D.; E: 1" H x 2" dia.
 USC Pacific Asia Museum
 Gift of Rosemary Kovack
 1980.18.1A-E

20



Lantern, Girl's Day
 Japan, 20th C.
 wood; paper, paint
 3.125" H x 1"W x 1" D
 USC Pacific Asia Museum
 Gift of Beverly Boatwright
 1980.19.1

21



Toy with Three Drums
Japan, 20th C.

4.5" H
USC Pacific Asia Museum
Gift of Mrs. Edward Posner
1980.54.1

22



Doll's coat; jibori
Japan, 20th C.
silk; metallic thread
2.75" H x 3" W
USC Pacific Asia Museum
Gift of Anne Wheeler
1980.68.1

23



Figurines, set of fourteen
China, early 20th C.
wood; pigment; string; cotton
Various, see details below
USC Pacific Asia Museum
Gift of L. Emma. Brodbeck
1980.72.2A-N

24



Purse
Japan, 20th C.
1.125" H x 0.75" W
USC Pacific Asia Museum
Gift of Miss L. Emma Brodbeck
1981.18.4

25



Kokeshi doll
Japan, 20th C.
wood; paint; silk
3" H x 1" W x 1" D
USC Pacific Asia Museum
Gift of Sarah B. Gyer
1982.126.2

26

*Doll*

Japan, 20th C.
wood; paint
3" H x 2" W x 2" D
USC Pacific Asia Museum
Gift of Sarah B. Gyer
1982.126.3

27

*Dolls, pair*

Japan, 20th C.
wood; paint
A: 4.25" H x 1.75" W x 1.5" D; B: 3" H x 1.25" W x 1" D
USC Pacific Asia Museum
Gift of Sarah B. Gyer
1982.126.4AB

28

*Hina Doll*

Japan, 20th C.
wood; pigment
overall: 2 1/4 in
USC Pacific Asia Museum
Gift of Mary Bourque
1982.37.1

29

*Figurine, Boy's Day Festival*

Japan, 20th C.
porcelain; glaze; paint; cotton
6.5" H x 7.25" W x 4" D
USC Pacific Asia Museum
Gift of the Topping family
1982.76.10

30

*Figurine, Boy's Day Festival*

Japan, 20th C.
ceramic; glass; wood; silk; paper
10" H x 8" W x 5" D
USC Pacific Asia Museum
Gift of the Topping family
1982.76.11

31

*Boy's day ceremonial helmet with box*

Japan, 20th C.

wood; lacquer; metal

A (helmet): 7" H x 11" W x 7.5" D?; B (box): 6" H x 10.75" W...

USC Pacific Asia Museum

Gift of The Topping family

1982.76.1AB

32

*Boy's Day Festival figurine*

Japan, 20th C.

clay; glaze; paint; eggshell

5" H

USC Pacific Asia Museum

Gift of the Topping family

1982.76.3

33

*Boy's Day Festival figurines, pair*

Japan, 20th C.

porcelain; metal; bead

A (man): 3.5" H x 2.75" W x 2" D; B (woman): 3.75" H x 2" W x 1.5" D; C: 5" H x 7" W x 0.75" D

USC Pacific Asia Museum

Gift of the Topping family

1982.76.5ABC

34

*Boy's Day Festival figurine*

Japan, 20th C.

cotton; plaster; hair; paper; foil; fabric

16.5" H x 7" W x 4.75" D

USC Pacific Asia Museum

Gift of the Topping family

1982.76.6

35

*Boy's Day Festival dolls, pair*

Japan, 20th C.

silk; hair; paper

5.5" H x 5.5" W x 3.75" D

USC Pacific Asia Museum

Gift of the Topping family

1982.76.7AB

36



Boy's Day Festival doll
Japan, 20th C.
silk; hair; plaster; cotton;
4.5" H x 2.5" W x 2" D
USC Pacific Asia Museum
Gift of the Topping family
1982.76.8

37



Doll
Japan, 20th c.

USC Pacific Asia Museum
Gift of Dr. and Mrs. G.C. Temes
1983.73.1

38



Girl's Day Festival display
Japan, 20th C.
plastic; paper
10.25" H x 7" W x 7" D
USC Pacific Asia Museum
Gift of Mrs. Mollie Heiman
1983.83.1

39



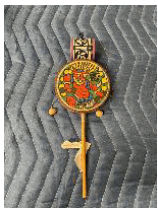
Set of Girl's Day dolls and furniture for festival display
Japan, 20th century
wood, lacquer, paint, silk, metal, gilding, wood, ceramic, hair, paper mache, glass,
fabric, wire, pewter
see details
USC Pacific Asia Museum
Gift of Mr. and Mrs. Kingo Okawauchi
1983.92.1A-Z

40



Horse
Japan, 20th C.
paper mache; silk; metallic thread; lacquer; wood;
7.75" H x 2.75" W x 7" D
USC Pacific Asia Museum
Gift of Mr. Roland Phillips
1984.76.1

41

*Kid's Drum*

Japan, early 20th C.

wood; paper

10.25" H x 3.5" W x 1.5" D

USC Pacific Asia Museum

Gift of Ralph and Dotty Pinney

1985.27.22

42

*Set of Three Dolls*

Japan,

wood; plaster; lacquer; silk, hair, metal

A/B: 5.5" H x 5.5" W x 4" D; C: 7.5" H x 4.5" W x 5" D; D: 3"H x 18.5" W x 4.625" D

USC Pacific Asia Museum

Gift of Peggy Malnar in memory of Mrs. Hallie Fellows

1985.30.4A-D

43

*Girl's Day doll display set*

Japan, 20th C.

wood; lacquer, metal, silk; fabric, silver; paper mache; wax paper; plastic; flannel

Various, see details below

USC Pacific Asia Museum

Gift of Mrs. Guy Atkinson

1986.48.1A-Z

44

*Model horse*

Japan, 20th C.

paper mache; silk; metallic thread

8.5" H x 8.5" W x 2.5" D

USC Pacific Asia Museum

Gift of William L. Tregoe Jr. Estate

1989.24.14

45

*Dolls, pair*

Japan, early 20th C.

plaster; hair; stone; metal; bamboo; velvet; cotton; silk; wood

A: 11" H x 8" W x 9" D; B: 10" H x 7" W x 6" D

USC Pacific Asia Museum

Gift of Nancy S. Young in memory of Jack and Eleanor J. Schwartz

1989.64.8AB

46



Dolls, Girl's Day, set of five

Japan, early 20th C.

Wood, pigment, fabric, paper, string, hair

A: 3.25" x 5.125" W x 2.5" D; B: 3.375" H x 4.5" W x 2.25" D; C: 3.25" H x 4.75" W x 2.125" D; D: 4.25" H x 4.125" W x 1.75" D; E: 4.25" H x 3.75" W x 2.125" D

USC Pacific Asia Museum

Gift of Nancy S. Young in memory of Jack and Eleanor J. Schwartz

1989.64.9A-E

47



Girl's Day festival set-up (partial)

Japan,

wood; silk; pigment; paper; metal

various, see details below

USC Pacific Asia Museum

Gift of Helen L. Neal in memory of Mary B. Stephens Bruce

1991.63.12A-L

48



Hatsuye Yamaguchi

Doll

Japan,

silk; cotton; straw, paper, paint

24.5" H x 15.5" W x 12" D

USC Pacific Asia Museum

Gift of Mrs. Hatsuye Yamaguchi

1995.55.1

49



Furniture set; Girl's Day doll display set

Japan,

wood; lacquer; silk; metal; paint; brass

USC Pacific Asia Museum

Gift of Suzanne W. Graves

1996.18.11

50



Tiger

Japan,

papier mache; paint

2.5" H x 2" W x 4.5" D

USC Pacific Asia Museum

Gift of Sylvia Posner

1996.20.10

51

*Fish*

Japan,
wood; paint; metal; string
4" H x 1.75" W x 2" D
USC Pacific Asia Museum
Gift of Sylvia Posner
1996.20.11

52

*Doll*

Japan,
wood; pigment
8.5" H x 2.5" W x 2" D
USC Pacific Asia Museum
Gift of Sylvia Posner
1996.20.4

53

*Girl's Day doll display set; Hinamatsuri*

Japan,
lacquer, gold, metal, wood, bamboo, fabric, paper, wire, plastic beads,
various: see details
USC Pacific Asia Museum
Gift of Nancy Fridell Acosta and Beatrice Fridell Jerrigan, in memory of Wilbur and
Barbara Fridell
1996.57.1

54

*Girl doll*

Japan, 20th C.
papier mache; plastic; cotton; paint
5.5" H x 2.5" W x 2" D
USC Pacific Asia Museum
Gift of Marilyn and George Brumder
2001.26.2

55

*Tiger with bobbing head*

Japan, 20th C.
wood; pigment; metal
1.5" H x 3.75" W x 1.125" D
USC Pacific Asia Museum
The Baker Family Trust
2004.13.1

56

*Horse*

Japan, 20th C.

clay; pigment; straw

3.75"H x 2.5"W x 1.75"D

USC Pacific Asia Museum

The Baker Family Trust

2004.13.10

57

*Figurine on stand*

Japan, 20th C.

paper; cloth; wood; pigment; paper mache

1.5"H x 2.125"W x 1.375"D

USC Pacific Asia Museum

The Baker Family Trust

2004.13.100

58

*Deer Dance doll*

Japan; Hanamaki, Iwate Prefecture, 20th C.

wood; plant fiber; fur; pigment;

4.675"H x 1.25"W x 1.125"D

USC Pacific Asia Museum

The Baker Family Trust

2004.13.101

59

*Musicians and screen*

Japan, 20th C.

paper; pigment; string

1.5"H x 2.125"W x 1.75"D

USC Pacific Asia Museum

The Baker Family Trust

2004.13.102

60

*Figurines and setting*

Japan; Hakone, 20th C.

bamboo; wood; pigment; thread; straw

3.25"H x 5.125"W x 1.5"D

USC Pacific Asia Museum

The Baker Family Trust

2004.13.103

61

*Figurines on stand*

Japan; Gifu prefecture; Kokufu town, 20th C.

wood; pigment; cloth; paper

4.125H x 3.5"W x 2.375D

USC Pacific Asia Museum

The Baker Family Trust

2004.13.104

62

*Pilgrims*

Japan; Shikoku island, 20th C.

cloth; pigment; wood; thread;

5.625"H x 3.5"W x 1.5"D

USC Pacific Asia Museum

The Baker Family Trust

2004.13.105

63

*Figurines, group of five*

Japan, 20th C.

clay; pigment

A: 1.125"H x 1.25"W x 0.75"D; B: 1.25"H x 1.25"W x 0.75"D; C: 1.25"H x 1.25"W x 0.75"D; D: 1.125"H x 1.25"W x 0.75"D; E: 1.25"H x 1.25"W x 0.75"D;

USC Pacific Asia Museum

The Baker Family Trust

2004.13.106A-E

64

*Figurines on stand*

Japan, 20th C.

wood; feathers; cloth; pigment;

2.5"H x 3"W x 1.375"D

USC Pacific Asia Museum

The Baker Family Trust

2004.13.107

65

*Figurine on stand*

Japan, 20th C.

paper; wood; pigment;

1.375"H x 1.25"W x 1.125"D

USC Pacific Asia Museum

The Baker Family Trust

2004.13.108

66



Figurine on stand
 Japan, 20th C.
 plastic; wood; cloth
 2.75"H x 3.125"W x 2.5"D
 USC Pacific Asia Museum
 The Baker Family Trust
 2004.13.109

67



Cicada on wheels
 Japan, 20th C.
 wood; pigment
 1.25"H x 2.25"W x 1.5"D
 USC Pacific Asia Museum
 The Baker Family Trust
 2004.13.11

68



Kabuki actor
 Japan, 20th C.
 wood; cloth; pigment; hair
 1.625"H x 1.875"W x 1.25"D
 USC Pacific Asia Museum
 The Baker Family Trust
 2004.13.110

69



Figurine in basket
 Japan, 20th C.
 straw; cloth; wood; pigment; string
 2"H x 2.5"DIA
 USC Pacific Asia Museum
 The Baker Family Trust
 2004.13.112

70



Geisha
 Japan, 20th C.
 paper; cloth; pigment; wood
 3.75"H x 2"W x 1.5"D
 USC Pacific Asia Museum
 The Baker Family Trust
 2004.13.113

71



Geisha
 Japan, 20th C.
 wood; cloth; pigment
 3.75"H x 2"W x 1.5"D
 USC Pacific Asia Museum
 The Baker Family Trust
 2004.13.114

72



Figurine on stand
 Japan, 20th C.
 cloth; pigment; paper; wood
 3.75"H x 2"W x 1.5"D
 USC Pacific Asia Museum
 The Baker Family Trust
 2004.13.115

73



Figurines on stand
 Japan, 20th C.
 wood; pigment; fabric
 1.875"H x 3.875"W x 1.5"D
 USC Pacific Asia Museum
 The Baker Family Trust
 2004.13.116

74



Figurine on stand
 Japan, 20th C.
 wood; pigment; fabric; string
 1.875"H x 2"W x 1.25"D
 USC Pacific Asia Museum
 The Baker Family Trust
 2004.13.117

75



Figurine on stand
 Japan, 20th C.
 wood; pigment; fabric; straw
 1.675"H x 2"W x 1.25"D
 USC Pacific Asia Museum
 The Baker Family Trust
 2004.13.118

76



Figurine on stand
 Japan, 20th C.
 wood; pigment
 1.75"H x 2"W x 1.25"D
 USC Pacific Asia Museum
 The Baker Family Trust
 2004.13.119

77



Bird on wheels
 Japan, 20th C.
 wood; pigment
 4.5"H x 5.75"W x 2.25"D
 USC Pacific Asia Museum
 The Baker Family Trust
 2004.13.12

78



Figurine on stand
 Japan, 20th C.
 wood; pigment; synthetic hair; string; fabric
 1.125"H x 2"W x 1.5"D
 USC Pacific Asia Museum
 The Baker Family Trust
 2004.13.120

79



Figurine on stand
 Japan, 20th C.
 wood; pigment; thread
 2.375"H x 2.375"W x 2.125"D
 USC Pacific Asia Museum
 The Baker Family Trust
 2004.13.121

80



Figurine on stand
 Japan, 20th C.
 wood; cloth; pigment; paper
 1.125"H x 2"W x 1.375"D
 USC Pacific Asia Museum
 The Baker Family Trust
 2004.13.122

81



Figurine on stand
 Japan, 20th C.
 wood; cloth; pigment
 1.75"H x 2"W x 1.375"D
 USC Pacific Asia Museum
 The Baker Family Trust
 2004.13.123

82



Boy playing with top
 Japan, 20th C.
 thread; wood; pigment; clay
 1.675"H x 1.75"W x 1.375"D
 USC Pacific Asia Museum
 The Baker Family Trust
 2004.13.124

83



Figurine on stand
 Japan, 20th C.
 wood; cloth; pigment
 1.675"H x 1.875"W x 1.5"D
 USC Pacific Asia Museum
 The Baker Family Trust
 2004.13.125

84



Boy riding toy horse
 Japan, 20th C.
 wood; pigment; clay; sythentic hair; fabric
 1.675"H x 1.875"W x 1.5"D
 USC Pacific Asia Museum
 The Baker Family Trust
 2004.13.126

85



Boy with doll
 Japan, 20th C.
 wood; thread; synthetic hair; pigment
 1.675"H x 1.75"W x 1.25"D
 USC Pacific Asia Museum
 The Baker Family Trust
 2004.13.127

86



Boy with drums
 Japan, 20th C.
 wood; cloth; pigment; thread;
 1.125"H x 1.875"W x 1.5"D
 USC Pacific Asia Museum
 The Baker Family Trust
 2004.13.128

87



Boy with puppet
 Japan, 20th C.
 wood; pigment; cloth; thread
 1.875"H x 1.875"W x 1.5"D
 USC Pacific Asia Museum
 The Baker Family Trust
 2004.13.129

88



Boy with lotus leaf
 Japan, 20th C.
 wood; pigment; fabric; synthetic hair; clay
 2.25"H x 1.875"W x 1.5"D
 USC Pacific Asia Museum
 The Baker Family Trust
 2004.13.130

89



Figurine on stand
 Japan, 20th C.
 wood; paper; cloth; thread; pigment; pinecone
 3.25"H x 2.5"W x 1.675"D
 USC Pacific Asia Museum
 The Baker Family Trust
 2004.13.131

90



Figurine on stand
 Japan, 20th C.
 wood; cloth; pigment; clay
 2.75"H x 2.675"W x 1.675"D
 USC Pacific Asia Museum
 The Baker Family Trust
 2004.13.132

91



Figurine on stand
 Japan, 20th C.
 wood; cloth; pigment; paper
 3.25"H x 2.675"W x 1.675"D
 USC Pacific Asia Museum
 The Baker Family Trust
 2004.13.133

92



Figurine on stand
 Japan, 20th C.
 thread; cloth; paper; wood; pigment;
 3"H x 2.375"W x 1.75"D
 USC Pacific Asia Museum
 The Baker Family Trust
 2004.13.134

93



Figurine on stand
 Japan, 20th C.
 pigment; wood; thread; metal
 2.5"H x 2"W x 1.5"D
 USC Pacific Asia Museum
 The Baker Family Trust
 2004.13.135

94



Figurine on stand
 Japan, 20th C.
 cloth; wood; pigment; thread
 3.25"H x 2.375"W x 1.75"D
 USC Pacific Asia Museum
 The Baker Family Trust
 2004.13.136

95



Figurine on stand
 Japan, 20th C.
 cloth; wood; thread; pigment
 2.5"H x 2.375"W x 1.875"D
 USC Pacific Asia Museum
 The Baker Family Trust
 2004.13.137

96



Figurine on stand
 Japan, 20th C.
 cloth; wood; thread; pigment; pinecone
 3"H x 3.875"W x 1.875"D
 USC Pacific Asia Museum
 The Baker Family Trust
 2004.13.138

97



Man reading scroll
 Japan, 20th C.
 thread; wood; pigment
 2"H x 2"W x 1.5"D
 USC Pacific Asia Museum
 The Baker Family Trust
 2004.13.139

98



Figurine on stand
 Japan, 20th C.
 synthetic hair; cloth; pigment; wood;
 3"H x 4.25"W x 2.875"D
 USC Pacific Asia Museum
 The Baker Family Trust
 2004.13.140

99



Figurine on stand
 Japan, 20th C.
 thread; pigment; clay; wood; paper
 2.375"H x 2"W x 1.5"D
 USC Pacific Asia Museum
 The Baker Family Trust
 2004.13.141

100



Geisha
 Japan, 20th C.
 cloth; clay; synthetic hair; wood; thread
 4.25" H x 3.75" W x 3.125" D
 USC Pacific Asia Museum
 The Baker Family Trust
 2004.13.142

101



Figurine on stand

Japan, 20th C.

synthetic hair; cloth; pigment; wood;

3" H x 4.125" W x 2.875" D

USC Pacific Asia Museum

The Baker Family Trust

2004.13.143

102



Pilgrim

Japan; Shikoku island; Matsuyama city, 20th C.

synthetic hair; cloth; pigment; wood;

5.375" H x 3" W x 2.125" D

USC Pacific Asia Museum

The Baker Family Trust

2004.13.144

103



Gosho doll

Japan, 20th C.

clay; wood; cloth; pigment

1.75" H x 2" W x 1.25" D

USC Pacific Asia Museum

The Baker Family Trust

2004.13.145

104



Cormorant fisherman

Japan, 20th C.

clay; wood; cloth; pigment; bamboo

4.625" H x 3" W x 2.125" D

USC Pacific Asia Museum

The Baker Family Trust

2004.13.146

105



Figurine on stand

Japan, 20th C.

clay; wood; cloth; straw; pigment

5.25" H x 2.25" W x 2.25" D

USC Pacific Asia Museum

The Baker Family Trust

2004.13.147

106

*Figurine on stand*

Japan, 20th C.

clay; wood; string; paper; pigment

2.625" H x 2" W x 1.5" D

USC Pacific Asia Museum

The Baker Family Trust

2004.13.148

107

*Figurine on stand*

Japan, 20th C.

clay; wood; string; pigment

1.5" H x 1.25" W x 1.25" D

USC Pacific Asia Museum

The Baker Family Trust

2004.13.149

108

*Whale*

Japan; Kochi, Kochi Prefecture, 20th C.

wood; pigment

6"H x 15"W x 14"D

USC Pacific Asia Museum

The Baker Family Trust

2004.13.15

109

*Figurines on stand*

Japan, 20th C.

clay; wood; cloth; string; pigment;

3.25" H x 5.625" W x 2.125" D

USC Pacific Asia Museum

The Baker Family Trust

2004.13.150

110

*Figurine on stand*

Japan, 20th C.

clay; wood; cloth; string; pigment;

5.25" H x 2.375" W x 1.75" D

USC Pacific Asia Museum

The Baker Family Trust

2004.13.151

111

*Figurine on stand*

Japan, 20th C.

clay; wood; cloth; straw; string; pigment;

5" H x 2.375" W x 2" D

USC Pacific Asia Museum

The Baker Family Trust

2004.13.152

112

*Figurine on stand*

Japan, 20th C.

clay; wood; cloth; straw; cotton; string; pigment;

5.5" H x 2.375" W x 2" D

USC Pacific Asia Museum

The Baker Family Trust

2004.13.153

113

*Figurine on stand*

Japan; Shimoda, 20th C.

wood; cloth; string; paper; pigment;

7.25" H x 3.5" W x 2.75" D

USC Pacific Asia Museum

The Baker Family Trust

2004.13.154

114

*Figurine on stand*

Japan; Hakone, 20th C.

wood; cloth; string; paper; pigment;

6" H x 3.375" W x 3" D

USC Pacific Asia Museum

The Baker Family Trust

2004.13.155

115

*Box with cover and toothpicks*

Japan, 20th C.

wood; paper; pigment

box: 1" H x 2.375" W x 3.625" D; toothpick: 3" H x 0.375" W x 0.125" D

USC Pacific Asia Museum

The Baker Family Trust

2004.13.156

116

*Figurine*

Japan, 20th C.

eggshell; cloth; paper; wood; plant fiber; shell; pigment

3.75" H x 3.625" W x 3.125" D

USC Pacific Asia Museum

The Baker Family Trust

2004.13.157

117

*Figurine*

Japan, 20th C.

eggshell; cloth; paper; pigment

4" H x 4.125" W x 3" D

USC Pacific Asia Museum

The Baker Family Trust

2004.13.158

118

*Sumo Wrestler*

Japan, 20th C.

eggshell; cloth; paper; plant fiber; pigment

2.25" H x 2" W x 2.125" D

USC Pacific Asia Museum

The Baker Family Trust

2004.13.159

119

*Headdress*

China, 20th C.

copper; metal

3.75" H x 8.375" W x 7" D

USC Pacific Asia Museum

The Baker Family Trust

2004.13.16

120

*Dog*

Japan, 20th C.

papier mache; pigment

Overall: 1.25" H x 1.625" W x 0.875" D; A: 0.375" H x 1" W x 1.625" D; B: 1" H x 1.625" W x 0.875" D

USC Pacific Asia Museum

The Baker Family Trust

2004.13.160AB

121



A Bell in the form of a Black and White Dog with red thread tie
 Japan, 20th C.
 clay; thread; pigment
 2.25" H x 2.25" W x 2.5" D
 USC Pacific Asia Museum
 The Baker Family Trust
 2004.13.161

122



A small Bell in the form of a yellow Dog
 Japan, 20th C.
 clay; thread
 1.625" H x 1.375" W x 2.75" D
 USC Pacific Asia Museum
 The Baker Family Trust
 2004.13.162

123



Bracelet with bells
 Japan, 20th C.
 clay; plant material; thread; pigment
 5.25" H x 3.75" W x 0.875" D
 USC Pacific Asia Museum
 The Baker Family Trust
 2004.13.163

124



Bell
 Japan, 20th C.
 clay; straw; pigment
 3" H x 1.375" W x 1" D
 USC Pacific Asia Museum
 The Baker Family Trust
 2004.13.164

125



Bell
 Japan, 20th C.
 clay; thread; pigment
 4" H x 2" W x 0.875" D
 USC Pacific Asia Museum
 The Baker Family Trust
 2004.13.165

126



Bell

Japan; Awa, 20th C.
clay; straw; paper
4.75" H x 2" W x 1.75" D
USC Pacific Asia Museum
The Baker Family Trust
2004.13.166

127



Bell

Japan, 20th C.
clay; straw; pigment
3.5" H x 2.5" W x 1.5" D
USC Pacific Asia Museum
The Baker Family Trust
2004.13.167

128



Model parade float

Japan; Kyoto, 20th C.
wood; paper; clay; cloth; pigment; metal
7.625" H x 2.75" W x 1.625"
USC Pacific Asia Museum
Baker Family Trust
2004.13.176

129



Model parade float

Japan; Kyoto, 20th C.
wood; paper; cloth; pigment
" 2" W x 1.25" D
USC Pacific Asia Museum
Baker Family Trust
2004.13.177

130



Top with straw rope

Japan, 20th C.
metal; wood; straw
A: 2.125" H x 2" DIA; B: 49" W x 1" DIA
USC Pacific Asia Museum
Baker Family Trust
2004.13.189AB

131

*Tiger*

Japan, 20th C.
 clay; pigment
 1.125"H x 1.625"W x 1.25"D
 USC Pacific Asia Museum
 The Baker Family Trust
 2004.13.19

132

*Bird carvings, pair*

Japan, 20th C.
 wood; pigment
 B: 3.5"H x 4.5"W x 1.25"D; A: 6.25"H x 6"W x 2"D
 USC Pacific Asia Museum
 The Baker Family Trust
 2004.13.20AB

133

*Bird carvings, pair*

Japan, 20th C.
 wood; pigment
 A: 2.625"H x 1.5"W x 2"D; B: 2.25"H x 1.5"W x 1.625"D
 USC Pacific Asia Museum
 The Baker Family Trust
 2004.13.21AB

134

*Bullfinch*

Japan; Dazaifu, Fukuoka Prefecture, 20th C.
 wood; pigment
 3"H x 3.25"W x 2.125"D
 USC Pacific Asia Museum
 The Baker Family Trust
 2004.13.22

135



Sasano

Carved-wood bird figure

Japan; Yamagata Prefecture; Yonezawa city, 20th C.
 wood; pigment
 2.75"H x 1.5"W x 1.75"D
 USC Pacific Asia Museum
 The Baker Family Trust
 2004.13.23

136



Paper Mâché Hen
 Japan, 20th C.
 paper mâché; paint; paper
 2.75"H x 2.25"W x 3"D
 USC Pacific Asia Museum
 The Baker Family Trust
 2004.13.24

137



Chicken on wheels
 Japan, 20th C.
 paper; wood; paste
 3.75"H x 3.25"W x 3.25"D
 USC Pacific Asia Museum
 The Baker Family Trust
 2004.13.25

138



Bird
 Japan, 20th C.
 wood; pigment
 1.25"H x 1.75"W x 2.25"D
 USC Pacific Asia Museum
 The Baker Family Trust
 2004.13.26

139



Red ox; Akabeko
 Japan; Fukushima Prefecture; Aizuwakamatsu city, 20th C.
 paper mâché; paint
 3.625"H x 2.25"W x 5.875"D
 USC Pacific Asia Museum
 The Baker Family Trust
 2004.13.28

140



Lion; shi-shi
 Japan, 20th C.
 papier mache; pigment
 4.75"H x 3.5"W x 7.25"D
 USC Pacific Asia Museum
 The Baker Family Trust
 2004.13.29

141

*Head-shaking tiger*

Japan, 20th C.

papier mache; paint

1.75"H x 3.75"W x 1.25"D

USC Pacific Asia Museum

The Baker Family Trust

2004.13.3

142

*Goblin*

Japan; Kumamoto Prefecture; Kumamoto City, 20th C.

wood; paper; pigment; hair

11"H x 3.125"W x 2.125"D

USC Pacific Asia Museum

The Baker Family Trust

2004.13.30

143

*Figurines , pair*

Japan, 20th C.

wood; pigment

A: 11"H x 3.125"W x 2.125"D; B: 12.125"H x 3.25"W x 2.375"D

USC Pacific Asia Museum

The Baker Family Trust

2004.13.31AB

144

*Horse*

Japan, 20th C.

straw; wood; cloth; paper

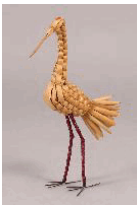
8"H x 2.25"W x 7.5"D

USC Pacific Asia Museum

The Baker Family Trust

2004.13.32

145

*Crane*

Japan, 20th C.

straw; metal; wood; cloth

6.675"H x 2"W x 3.75"D

USC Pacific Asia Museum

The Baker Family Trust

2004.13.33

146



Cricket
Japan, 20th C.
straw
1"H x 1.5"W x 6"D
USC Pacific Asia Museum
The Baker Family Trust
2004.13.34

147



Horse
Japan, 20th C.
straw
3.5"H x 1.25"W x 2"D
USC Pacific Asia Museum
The Baker Family Trust
2004.13.35

148



Mice
Japan, 20th C.
wood; pigment
A: 1.375"H x 1.25"W x 2"D; B: 1.25"H x 2"W x 2.375"D
USC Pacific Asia Museum
The Baker Family Trust
2004.13.36AB

149



Floating dolls
Japan; Tottori Prefecture, 20th C.
bamboo; paper; clay; pigment; foil
A: 4"H x 8"W x 1"D; B: 4"H x 8.25"W x 1"D
USC Pacific Asia Museum
The Baker Family Trust
2004.13.38AB

150



Figurines on stand
Japan, 20th C.
paper; straw; wood; pigment
4.5"H x 1.875"W x 1.75"D
USC Pacific Asia Museum
The Baker Family Trust
2004.13.39

151

*Tiger*

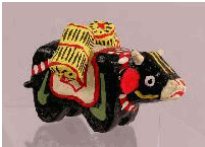
Japan, 20th C.
wood; pigment
2.375" H x 2" W x 6.25" D
USC Pacific Asia Museum
The Baker Family Trust
2004.13.4

152

*Shi-shi*

Japan, 20th C.
wood; paper; pigment
3.675"H x 2.5"W x 1.75"D
USC Pacific Asia Museum
The Baker Family Trust
2004.13.40

153

*Cow made from paper mâché*

Japan, 20th C.
papier mache(?); pigment
2.125"H x 2.5"W x 3.75"D
USC Pacific Asia Museum
The Baker Family Trust
2004.13.41

154

*Sake game set*

Japan, 20th C.
wood; lacquer; pigment
A: 1.125"H x 2.375"DIA; B: 1.125"H x 2.375"DIA; C: 1"H x 2"DIA; D: 0.75"H x 1.875"DIA; E: 0.675"H x 0.75"DIA; F: 0.675"H x 0.675"W x 0.675"D;
USC Pacific Asia Museum
The Baker Family Trust
2004.13.43

155

*Doll heads*

Japan; Shimizu, Shizuoka Prefecture, 20th C.
clay; straw; bamboo; paper; pigment
4"H x 1.375"W x 1.375"D
USC Pacific Asia Museum
The Baker Family Trust
2004.13.44

156

*Hand drum and stand*

Japan, 20th C.

plastic; wood; paper; cloth; metal

overall: 11.125"H x 2.75"W x 2.375"D; A: 10.875"H x 2.75"W x 2"D; B: 5.5"H x 2.375"DIA

USC Pacific Asia Museum

The Baker Family Trust

2004.13.45AB

157

*Hand drum*

Japan, 20th C.

wood; paper; metal; cloth;

11.125"H x 2.75"W x 2.125"D

USC Pacific Asia Museum

The Baker Family Trust

2004.13.46

158

*Figurines, pair*

Japan, 20th C.

wood; pigment

A: 0.675"H x 0.25"DIA; B: 0.675"H x 0.25"DIA

USC Pacific Asia Museum

The Baker Family Trust

2004.13.47AB

159

*Doll in wooden case*

Japan, 20th C.

wood; glass; paper; pigment

7.5"H x 3"W x 2.25"D

USC Pacific Asia Museum

The Baker Family Trust

2004.13.48

160

*Lion head; shi-shi*

Japan; Toyama, Toyama Prefecture, 20th C.

hair; pigment; wood; plant fiber

4.25"H x 5.75"W x 6"D

USC Pacific Asia Museum

The Baker Family Trust

2004.13.49

161



Tiger

Japan; Shimane Prefecture; Izumo city, 20th C.
paper mâché; pigment; fabric; cloth
4.875"H x 4.25"W x 1.75"D
USC Pacific Asia Museum
The Baker Family Trust
2004.13.5

162



Basket with figure

Japan, 20th C.
straw; paper; thread;
1.75"H x 1.5"DIA
USC Pacific Asia Museum
The Baker Family Trust
2004.13.50

163



Butterfly hairpin

Japan, 20th C.
straw; wire
9"H x 2.75"W x 0.25"D
USC Pacific Asia Museum
The Baker Family Trust
2004.13.51

164



Dragonfly hairpin

Japan, 20th C.
wire; straw; bead
7.5"H x 2.25"W x 2.5"D
USC Pacific Asia Museum
The Baker Family Trust
2004.13.52

165



Snowshoe model with Daruma figurines

Japan, 20th C.
straw; wood; pigment
0.375"H x 1.675"W x 2.675"D
USC Pacific Asia Museum
The Baker Family Trust
2004.13.53

166



Daruma figurines in straw basket

Japan, 20th C.

wood; pigment; straw; paper

2.375"H x 1.125"W x 0.75"D

USC Pacific Asia Museum

The Baker Family Trust

2004.13.54

167



Model fish trap

Japan, 20th C.

straw

1"H x 0.75"W x 1.75"D

USC Pacific Asia Museum

The Baker Family Trust

2004.13.55

168



Model basket

Japan, 20th C.

straw

2"H x 1.25"DIA

USC Pacific Asia Museum

The Baker Family Trust

2004.13.56

169



Pillow with figurine and shirt

Japan, 20th C.

cloth, paper, thread, pigment

1.25"H x 1.375"W x 3.75"D

USC Pacific Asia Museum

The Baker Family Trust

2004.13.57

170



Puzzle box

Japan, 20th C.

wood; pigment

0.875"H x 1.125"W x 1.5"D

USC Pacific Asia Museum

The Baker Family Trust

2004.13.58

171



Paper doll
 Japan, 20th C.
 paper; pigment
 4.375"H x 0.75"W x 0.675"D
 USC Pacific Asia Museum
 The Baker Family Trust
 2004.13.59

172



Shell container
 Japan, 20th C.
 shell; pigment
 A(less elaborate): 0.675"H x 3"W x 0.375"D; B(more elaborate): 0.875"H x 3"W x 2.675"D;
 USC Pacific Asia Museum
 The Baker Family Trust
 2004.13.60AB

173



Elder Sister dolls
 Japan; Matsue, Shimane Prefecture, 20th C.
 paper; pigment
 A: 6.125"H x 2"W x 1.5"D; B: 6.375"H x 2"W x 1.25"D; C: 6.5"H x 2"W x 1.25"D; D:
 4.675"H x 1.875"W x 0.5"D; E: 6.125"H x 1.875"W x 1.25"D; F: 6.25"H x 2"W x 0.875"D; G: 6.25"H x 2"W x 1.125"D;
 USC Pacific Asia Museum
 The Baker Family Trust
 2004.13.61A-G

174



Azuma Doll Dog Figurine sold as Charms
 Japan, 20th C.
 papier mache; paint
 2.675"H x 1.375"W x 2.675"D
 USC Pacific Asia Museum
 The Baker Family Trust
 2004.13.67

175



Azuma Doll Dog Figurine sold as Charms
 Japan, 20th C.
 papier mache; paint; straw
 3.125"H x 2.125"W x 3.125"D
 USC Pacific Asia Museum
 The Baker Family Trust
 2004.13.68

176



Azuma Doll Dog Figurine sold as Charms
 Japan, 20th C.
 papier mache
 3.375"H x 1.75"W x 3.5"D
 USC Pacific Asia Museum
 The Baker Family Trust
 2004.13.69

177



Azuma Doll Dog Figurine
 Japan, 20th C.
 papier mache; paint
 2.875"H x 2.25"W x 2.5"D
 USC Pacific Asia Museum
 The Baker Family Trust
 2004.13.70

178



Dog; azuma
 Japan, 20th C.
 papier mache; pigment
 5.75" H x 3.375" W x 6.25" D
 USC Pacific Asia Museum
 The Baker Family Trust
 2004.13.72

179



Azuma Doll Dog Figurine
 Japan, 20th C.
 paper mache
 8.875"H x 4"W x 8.25"D
 USC Pacific Asia Museum
 The Baker Family Trust
 2004.13.73

180



Daikoku and Ebisu
 Japan, 20th C.
 wood; pigment
 A: 4"H x 2.5"W x 1.875"D; B: 3.625"H x 2.125"W x 2"D
 USC Pacific Asia Museum
 The Baker Family Trust
 2004.13.7AB

181

*Horse*

Japan, 20th C.

wood; cloth; metal; straw; pigment;

4"H x 2"W x 2"D

USC Pacific Asia Museum

The Baker Family Trust

2004.13.8

182

*A round wooden Tanuki*

Japan, 20th C.

wood; pigment

1.375"H x 1.375"W x 1.125"D

USC Pacific Asia Museum

The Baker Family Trust

2004.13.84

183

*Bell in the form of a Tanuki wearing a straw hat and holding a sake bottle.*

Japan, 20th C.

clay; pigment; straw

3"H x 2"W x 2.375"D

USC Pacific Asia Museum

The Baker Family Trust

2004.13.85

184

*Dancers*

Japan, 20th C.

wood; glass; paper; cloth; pigment;

2.5"H x 3.25"W x 1.5"D

USC Pacific Asia Museum

The Baker Family Trust

2004.13.86

185

*Figurine on stand*

Japan, 20th C.

paper; pigment; wood

2.375"H x 2.875"W x 1.75"D

USC Pacific Asia Museum

The Baker Family Trust

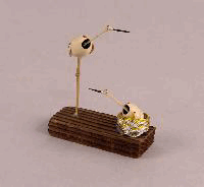
2004.13.87

186



Figurine on stand
 Japan, 20th C.
 paper; wood; pigment;
 2"H x 1.125"W x 0.75"D
 USC Pacific Asia Museum
 The Baker Family Trust
 2004.13.88

187



Two Cranes with long movable necks.
 Japan, 20th C.
 metal; paper; wood; bamboo; pigment
 3.25"H x 2.75"W x 1.125"D
 USC Pacific Asia Museum
 The Baker Family Trust
 2004.13.89

188



Horse
 Japan, 20th C.
 clay; pigment; wood; synthetic hair; cloth;
 4"H x 4.25"W x 2"D
 USC Pacific Asia Museum
 The Baker Family Trust
 2004.13.9

189



Woman and bathing man
 Japan, 20th C.
 paper; cloth; wood; pigment
 1."H x 2.125"W x 1.375"D
 USC Pacific Asia Museum
 The Baker Family Trust
 2004.13.90

190



Figurines on stand
 Japan, 20th C.
 cloth; pigment; paper; wood
 1.375"H x 2.125"W x 1.375"D
 USC Pacific Asia Museum
 The Baker Family Trust
 2004.13.91

191

*Prince and Princess*

Japan, 20th C.

wood; cloth; paper; pigment

A: 1.375"H x 1.5"W x 1.25"D; B: 1.25"H x 1.5"W x 1.25"D;

USC Pacific Asia Museum

The Baker Family Trust

2004.13.92AB

192

*Tanuki with moving Head and Straw hat, holding Sake bottle and ledger Book*

Japan, 20th C.

wood; cloth; paper; paper mache; pigment

1.625" H x 2.125" W x 1.375" D

USC Pacific Asia Museum

The Baker Family Trust

2004.13.93

193

*Figurine on stand*

Japan, 20th C.

wood; cloth; pigment;

1.5"H x 2.125"W x 1.375"D

USC Pacific Asia Museum

The Baker Family Trust

2004.13.94

194

*Figurine on stand*

Japan, 20th C.

wood; cloth; paper; pigment

1.875"H x 1.5"DIA

USC Pacific Asia Museum

The Baker Family Trust

2004.13.95

195

*Man in bowl*

Japan, 20th C.

paper; wood; cloth; pigment

1.5"H x 2.125"W x 1.375"D

USC Pacific Asia Museum

The Baker Family Trust

2004.13.96

196



Geisha and koto
Japan, 20th C.
paper; pigment; string;
1.5"H x 3.125"W x 1.625"D
USC Pacific Asia Museum
The Baker Family Trust
2004.13.97

197



Man and woman
Japan, 20th C.
wood; paper; cloth; pigment
1.125"H x 2.125"W x 1.375"D
USC Pacific Asia Museum
The Baker Family Trust
2004.13.98

198



Figurine on stand
Japan, 20th C.
wood; paper; pigment
2.375"H x 1.375"W x 0.75"D
USC Pacific Asia Museum
The Baker Family Trust
2004.13.99
